

97013576
Grille, Bathroom Exhaust



10-3/4" x 11-1/4"




97011723
Grille, Bathroom Exhaust



9" x 9-1/4"



688
Fan,
Bathroom
Exhaust

 listed for use over bathtubs and showers when connected to a GFCI protected branch circuit.



Step-opening regulator
3" round duct, molded plastic impellers
7-1/4" x 7-1/2" x 3-5/8" high housing
Damper/Duct connector included

97006931 8-3/4" x 10-1/2" x 1/8"
A60508 8" x 11 x 3/8"
A60231 8-1/2" x 11-1/4" x 3/8"
A64483 8-3/4" x 10-1/2" x 3/8"
A60434 8-7/8" x 8-7/8" x 3/8"
A60476 9-1/2" x 10-3/4" x 3/8"

A61103 10-1/2" x 10-1/2" x 3/8"
AF4035 8-3/4" x 10-1/2" x 3/32"
AL9268 10-1/2" x 10-1/2" x 3/8" (replaces 99010193)
AL9099 10-3/4" x 11-3/4" x 1/4" (with light lens)
AL9175 11-1/2" x 11-3/4" x 1/4" (with light lens)

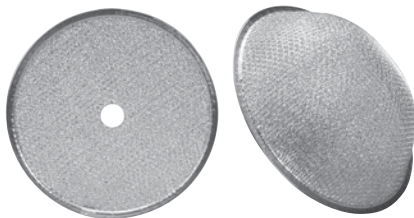
Filters, Aluminum Grease



AirCare, Aubrey, Broan, Caloric, G.E. Nutone, Roper, Sears, White Westinghouse

AR1175 9-1/2" round flat w/ hole (replaces 99010042)
AR1182 11-1/2" round flat w/ hole (replaces 99010046)
ARD1199 10-1/2" round w/ 3-1/4" rise (replaces 99010122)

Filters, Round Aluminum Grease

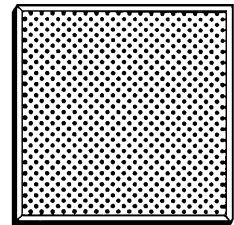


Broan, G.E. Nutone, Sears

97007696 8-3/4" x 10-1/2" x 3/8" (Microtek filter, aluminum & charcoal)
CF2206 8" x 9-1/2" x 3/8"
Filters, Charcoal

Custom Filters

Order any size filter with no hassle. Give us a call with your filter dimensions and we'll get you the filter that you need. **Order by: Width x Length x Thickness (specify aluminum or charcoal)**



AirCare, Aubrey, Broan, Caloric, G.E. Nutone, Roper, Sears, White Westinghouse



<http://www.pdqsupplyinc.com>



"LIKE" us on Facebook!
Go to our website and click the Like button on the right.

402401 24" white

402404 24" stainless

403001 30" white

403004 30" stainless

Hood, Two-Speed Economy Range with Filter

Volts: 120
Amps: 2.0
RPM: 2795
Sones: 6.5 horz 6.5 vert
CFM: 160
Duct: 3-1/4" x 10"



Model 40000 series ducted

The 24" & 30" white and stainless range hoods are stock items.
If you require a different size or color, please call for a quote.



Model 40000 replacement parts

97012248 Complete fan assembly – used on 40000-B thru H

99080218 Motor – used on all except 40000-H

0611800 Fan blade – used on all except 40000-H

99020272 Fan blade – used on 40000-H

99110437 Light lens – used on all

97006931 Aluminum filter – used on all



97012248 shown

412401 24" white

412404 24" stainless

413001 30" white

413004 30" stainless

Hood, Two-Speed Economy Range with Microtek Filter

Volts: 120
Amps: 2.0
RPM: 2850
RHP Index: 8.70



Model 41000 series duct free

The 24" & 30" white and stainless range hoods are stock items.
If you require a different size or color, please call for a quote.



Model 41000 replacement parts

97011220 Complete fan assembly – used on 41000, 41000-B, C, D thru K

9808200 Motor – used on 41000-D thru J

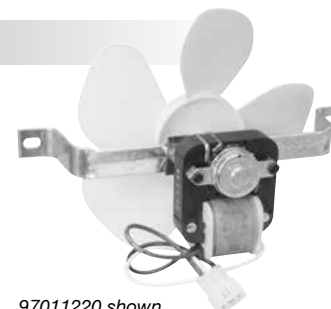
99080365 Motor – used on 41000-K, L

0611200 Fan blade – used on 41000, 41000-B, C

99020287 Fan blade – used on 41000-K, L

99110437 Light lens – used on all

97007696 Microtek filter – used on all



97011220 shown

CURRENT PRICING CAN BE FOUND ON OUR WEBSITE

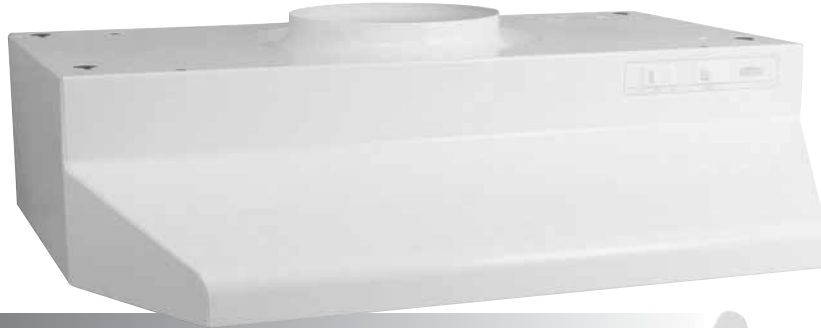
All logos, trademarks, part numbers, photos & illustrations are intended solely for identification. Items offered for sale are not represented to be manufactured by the company that built the original equipment.

PHONE: 800-843-0903 • FAX: 800-344-1848 • WEB: www.pdqsupplyinc.com • FB: [facebook.com/pdqsupplyinc](https://www.facebook.com/pdqsupplyinc)

- 422401** 24" white
- 422404** 24" stainless
- 423001** 30" white
- 423004** 30" stainless

**Hood, Two-Speed
Economy Range with Filter**

Volts: 120
Amps: 2.5
RPM: 1750
Sones: 6.0
CFM: 190
Duct: 7" round



Model 42000 series ducted

The 24" & 30" white and stainless range hoods are stock items. If you require a different size or color, please call for a quote.

Model 42000 replacement parts

- 97011222** Complete fan assembly – used on 42000-A thru I
- 97012248** Complete fan assembly – used on 42000-K
- 99080367** Motor – used on 42000-J
- 0611800** Fan blade – used on 42000-A thru I
- 99020272** Fan blade – used on 42000-J, K
- 99110437** Light lens – used on all
- 99010122** Aluminum filter – used on 42000-A thru J
- 97006931** Aluminum filter – used on 42000-K



**97012038
Motor, Fan**



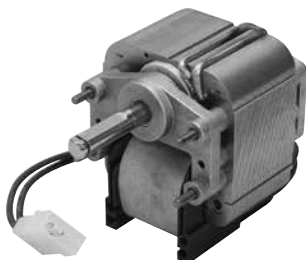
120V • .90 amp
CCW rotation
1-3/4" shaft length

**97012041
Motor, Fan**



120V • 0.9 amp
CCW rotation
1-5/8" shaft length

**99080667
Motor, Range Hood**



120V • 1.5 amp
CCW rotation
1-3/8" shaft length

**97016970
Switch, Fan & Light Switch (Kit)**



Fan motor switch
(3 terminals)

Light switch
(2 terminals)

CURRENT PRICING CAN BE FOUND ON OUR WEBSITE

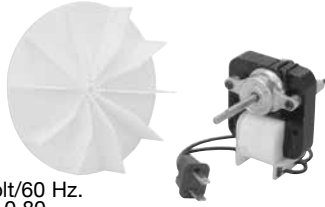
All logos, trademarks, part numbers, photos & illustrations are intended solely for identification. Items offered for sale are not represented to be manufactured by the company that built the original equipment.

PHONE: 800-843-0903 • FAX: 800-344-1848 • WEB: www.pdqsupplyinc.com • FB: facebook.com/pdqsupplyinc

VENT/UTILITY MOTORS

500/600 SERIES

EM550
Kit, Vent Motor



- 120 Volt/60 Hz.
- Amps: 0.80
- Rotation: CCW
- RPM: 3000
- Shaft: 1-3/4"L x 7/32" dia.
- Stack: 1/2" thick.
- Lead: 120 V plug.

EM551
Motor, Vent



- 120 Volt/60 Hz.
- Amps: 1.2/0.80
- Rotation: CW
- RPM: 3000/1550
- Shaft: 1-7/16"L x 7/32" dia.
- Stack: 7/8" thick.
- Lead: 2 speed plug.

EM552
Motor, Vent



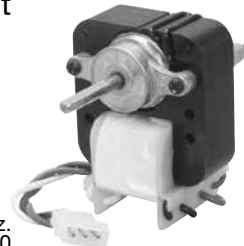
- 120 Volt/60 Hz.
- Amps: 0.9
- Rotation: CCW
- RPM: 3000
- Shaft: 1-1/4"L x 7/32" dia.
- Stack: 3/4" thick.
- Lead: 120 V plug.

EM553
Motor, Vent



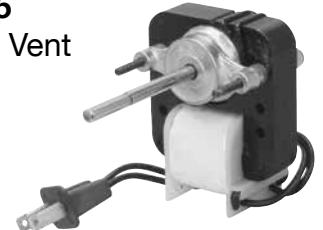
- 120 Volt/60 Hz.
- Amps: 0.8
- Rotation: CCW
- RPM: 3000
- Shaft: 1-3/4"L x 7/32" dia.
- Stack: 3/4" thick.
- Lead: Eyelets.

EM554
Motor, Vent



- 120 Volt/60 Hz.
- Amps: 1.2/0.80
- Rotation: CCW
- RPM: 3000/1550
- Shaft: 1-7/16"L x 7/32" dia.
- Stack: 7/8" thick.
- Lead: 2 speed plug.

EM555
Motor, Vent



- 120 Volt/60 Hz.
- Amps: 0.80
- Rotation: CCW
- RPM: 3000
- Shaft: 2-3/8"L x 7/32" dia.
- Stack: 5/8" thick.
- Lead: 120 V plug.

EM671
Motor, Utility



- 120 Volt/60 Hz.
- Amps: 0.55
- Rotation: CW/CCW
- RPM: 3000
- Shaft: 1-1/4"L x 3/16" dia.
- Stack: 5/8" thick.
- Has bushings.

EM678
Motor, Utility



- 120 Volt/60 Hz.
- Amps: 0.55
- Rotation: CW/CCW
- RPM: 3000
- Shaft: 1-1/2"L x 3/16" dia.
- Stack: 1/2" thick.
- Has bushings.

EM680
Motor, Utility



- 120 Volt/60 Hz.
- Amps: 0.9
- Rotation: CW/CCW
- RPM: 3000
- Shaft: 1-1/2"L x 3/16" dia.
- Stack: 1-1/8" thick.
- Has bushings.

EM683
Motor, Utility



- 240 Volt/60 Hz.
- Amps: 0.25
- Rotation: CW/CCW
- RPM: 3000
- Shaft: 1-1/4"L x 3/16" dia.
- Stack: 7/8" thick.
- Has bushings.

EM685
Kit, Utility Motor



- 120 Volt/60 Hz.
- Amps: 0.82/0.21
- Rotation: CW
- RPM: 3000/1550
- Shaft: 1-3/4"L x 3/16" dia.
- Stack: 7/8" thick.
- Has bushings.

EM688
Motor, Ball Bearing Utility



- 120 Volt/60 Hz.
- Amps: 0.86
- Rotation: CW/CCW
- RPM: 3000
- Shaft: 1-1/2"L x 3/16" dia.
- Stack: 1-1/8" thick.
- Has bearings.

CURRENT PRICING CAN BE FOUND ON OUR WEBSITE

All logos, trademarks, part numbers, photos & illustrations are intended solely for identification. Items offered for sale are not represented to be manufactured by the company that built the original equipment.

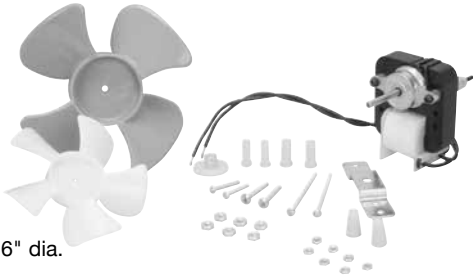
PHONE: 800-843-0903 • FAX: 800-344-1848 • WEB: www.pdqsupplyinc.com • FB: facebook.com/pdqsupplyinc

VENT/UTILITY MOTORS

600 SERIES MOTORS

EM670 Kit, Utility Motor

- 120 Volt/60 Hz.
- Amps: 0.55
- Rotation: CW/CCW
- RPM: 3000
- Shaft: 1-1/4"L x 3/16" dia.
- Stack: 5/8" thick.
- Has bushings.



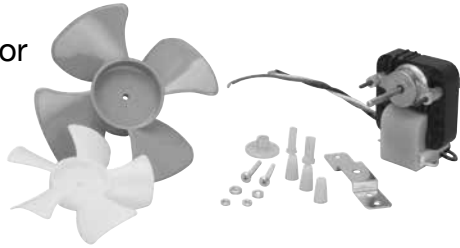
EM672 Kit, Utility Motor

- 240 Volt / 50/60 Hz.
- Amps: 0.45/0.22
- Rotation: CW/CCW
- RPM: 3000
- Shaft: 1-1/4"L x 3/16" dia.
- Stack: 5/8" thick.
- Has bushings.



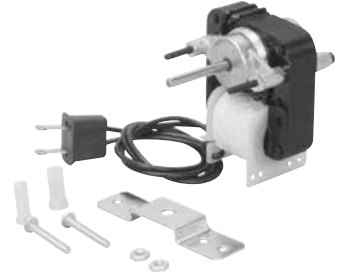
EM673 Kit, Utility Motor

- 120 Volt/60 Hz.
- Amps: 0.55/0.34
- Rotation: CW/CCW
- RPM: 3000/1550
- Shaft: 1-1/4"L x 3/16" dia.
- Stack: 5/8" thick.
- Has bushings.



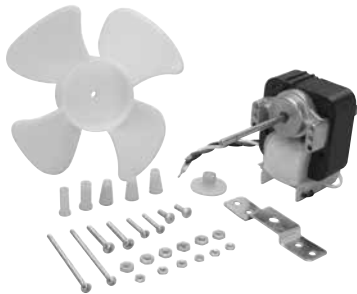
EM674 Kit, Utility Motor

- 120 Volt/60 Hz.
- Amps: 0.55
- Rotation: CW/CCW
- RPM: 3000
- Shaft: 1-1/4"L x 3/16" dia.
- Stack: 5/8" thick.
- Has bushings.



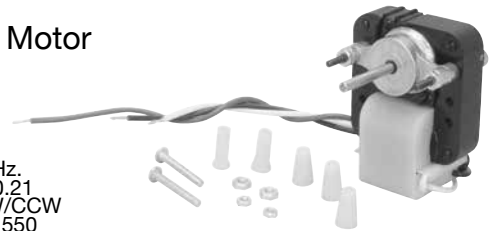
EM675 Kit, Utility Motor

- 120/240 Volt/ 50/60 Hz.
- Amps: 1.6/.80 - 1.0/.52
- Rotation: CW/CCW
- RPM: 3000
- Shaft: 2-3/8"L breakaway
- Stack: 1" thick.
- Has bushings.



EM681 Kit, Utility Motor

- 120 Volt/60 Hz.
- Amps: 0.82/0.21
- Rotation: CW/CCW
- RPM: 3000/1550
- Shaft: 1-3/8"L x 3/16" dia.
- Stack: 5/8" thick.
- Has bushings.



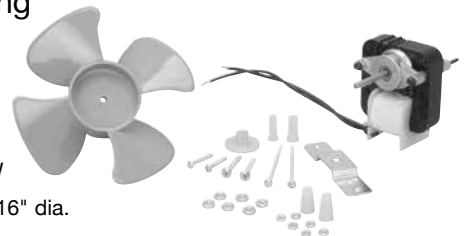
EM682 Kit, Utility Motor

- 120 Volt/60 Hz.
- Amps: 0.60/0.36
- Rotation: CW/CCW
- RPM: 3000/1550
- Shaft: 1-3/8"L x 3/16" dia.
- Stack: 1" thick.
- Has bushings.



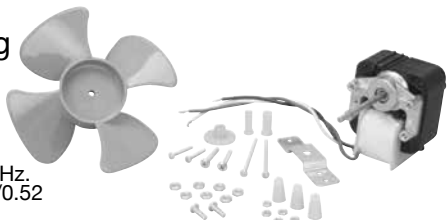
EM686 Kit, Ball Bearing Utility Motor

- 120 Volt/60 Hz.
- Amps: 0.41
- Rotation: CW/CCW
- RPM: 3000
- Shaft: 1-1/4"L x 3/16" dia.
- Stack: 5/8" thick.
- Has bearings.



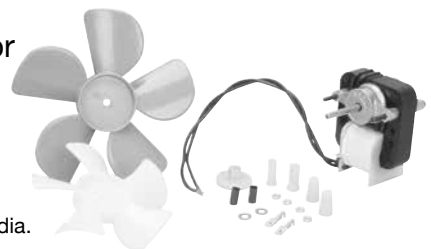
EM687 Kit, Ball Bearing Utility Motor

- 120/240 Volt / 50/60 Hz.
- Amps: 1.6/0.80 - 1.0/0.52
- Rotation: CW/CCW
- RPM: 3000
- Shaft: 2-3/8"L x 3/16" dia.
- Stack: 1-1/8" thick.
- Has bearings.



EM690 Kit, Commercial Evaporator Motor

- 120 Volt/60 Hz.
- Amps: 0.55
- Rotation: CW/CCW
- RPM: 3000
- Shaft: 1-1/4"L x 3/16" dia.
- Stack: 5/8" thick.
- Has bushings.



CURRENT PRICING CAN BE FOUND ON OUR WEBSITE

All logos, trademarks, part numbers, photos & illustrations are intended solely for identification. Items offered for sale are not represented to be manufactured by the company that built the original equipment.

PHONE: 800-843-0903 • FAX: 800-344-1848 • WEB: www.pdqsupplyinc.com • FB: [facebook.com/pdqsupplyinc](https://www.facebook.com/pdqsupplyinc)