

RANGE

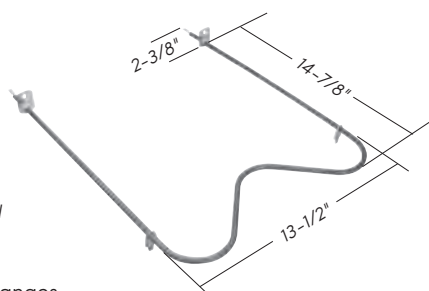
BAKE ELEMENT

2395

2000 Watts
250 Volts



.250" male terminal
push-in connection



Used on 20" & 24" ranges

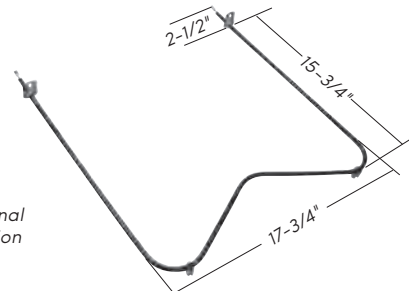
BAKE ELEMENT

2397

2300 Watts
250 Volts



.250" male terminal
push-in connection



Used on 30" ranges

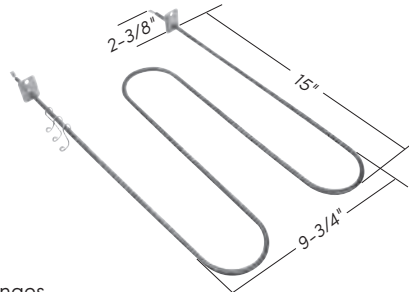
BROIL ELEMENT

2396

2800 Watts
250 Volts



.250" male terminal
push-in connection

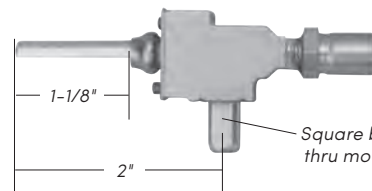


Used on 20" & 24" ranges

BURNER VALVE

1250

115° shaft rotation
Natural gas



Square bolt
thru mount

1249

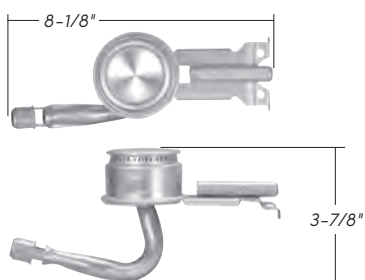
Bolt & Gasket



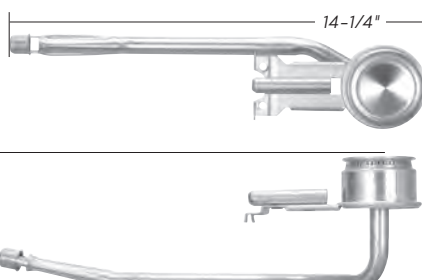
BURNER ASSEMBLIES

1398

Front



Used on 24", 30" & 36" ranges



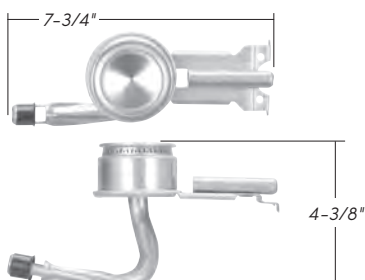
1399

Rear

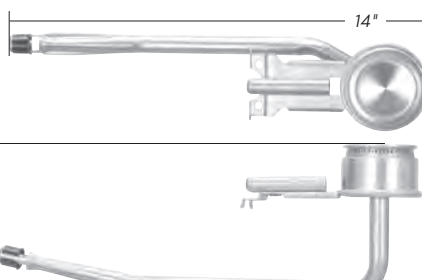
BURNER ASSEMBLIES

1404

Front



Used on 20" ranges



1405

Rear

DIASTAT CLIP

4770



Used for mounting oven temperature bulb to oven cavity

DRIP PAN

7082

7/8" diameter



Used with oven grate #7080

RANGE

DRIP PANS

7771
6"



7770
8"



Slot

DOOR GASKETS

7870 15-3/4" overall length

7872 21-3/4" overall length

7874 18" overall length

7875 11-3/4" overall length



DOOR HINGE

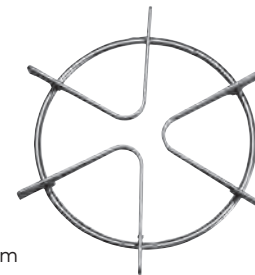
8186
"Lift-off" style



Used on 30" solid door models
and 24" open window models

GRATE

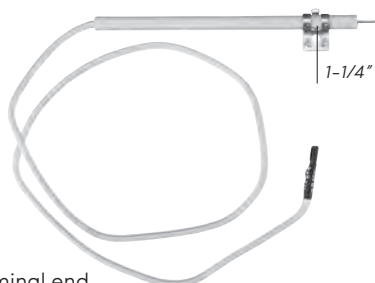
7080
7-1/4" diameter
1" height



Has a single pin on the bottom
Used with drip pan **#7082**

IGNITER

1490
Oven Spark
24" lead wires
5" porcelain



Has a .110" female terminal end

IGNITER

1487
Top Burner Spark
54" lead wires
Has .110" female terminal end



1488
Spark Strap
(Sold separately)



INDICATOR LIGHT

2672
1/3 watt
250V



Has (2) .250" male terminals

INFINITE SWITCHES

2286
(factory id #NL811530)
Used with 6" elements
5.4 - 7 amps, 240V
OEM replacement for #2282

2287
(factory id #NL812660)
Used with 8" elements
8.9 - 11 amps, 240V
OEM replacement for #2283



Spring clip on shaft

Current sensing type

KNOBS

6476
Electric Infinite
1/8" recessed shaft
2" diameter



"D" position

6376
Electric Thermostat
1/8" recessed shaft
Approx. 320° at 6 o'clock
2" diameter



"D" position

"D" position is when knob is viewed from the back in the OFF position

RANGE

KNOBS

"D" position is when knob is viewed from the back in the OFF position

6476W

Electric Infinite
1/8" recessed shaft
2" diameter


"D" position



6376W

Electric Thermostat
1/8" recessed shaft
Approx. 320° at 6 o'clock
2" diameter


"D" position



KNOBS

6286W

Gas Burner
Flush shaft
2" diameter


.256"
"D" position



6255W

Gas Thermostat
Flush shaft
Approx. 400° at 6 o'clock
2" diameter


.340"
"D" position



KNOBS

6290W

Gas Burner
Flush shaft
2" diameter


.256"
"D" position



6292W

Gas Thermostat
Flush shaft
Approx. 350° at 6 o'clock
2" diameter


.256"
"D" position



MAIN TOP

5275

White



Used on 20" gas ranges

MAIN TOP

5291

White



Used on 30" gas ranges

MAIN TOP

5292W

White



Used on 24" gas ranges

CATCH PIN

4973P



RANGE

PRESSURE REGULATOR

1972

1/2" NPT inlet x 1/2" NPT outlet
5"/10" convertible
Set at 5" natural gas



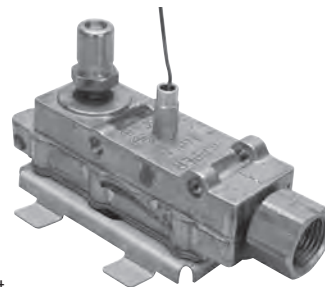
SAFETY VALVES

1282

(factory id #5817G0100)

1285

(factory id #5817G0119)

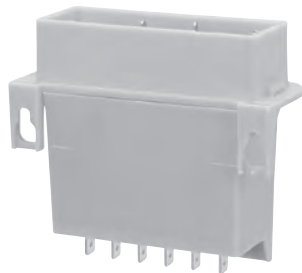


Has 3/8" inlet
Includes mounting bracket

SPARK MODULE

2353 2 + 1

(factory id #7087)
(factory id #DG189)



SPARK MODULES

2356 4 + 1

(factory id #6547) Shown
Has (6) .250" &
(5) .110" male terminals

2357 2 + 1

(factory id #6549)
Has (6) .250" &
(3) .110" male terminals



SPARK MODULE

2358 3 + 1

(factory id #DG186)



NEW

Has (6) .250" & (4) .110"
male terminals

SPARK MODULE

2361 2 + 0



NEW

Has (2) .250" & (2) .110" male terminals

SPARK SWITCH HARNESS

1261

Top Burner
55" length



SPARK SWITCH HARNESS

1263

Top Burner
63" length



SPARK SWITCH

1191

Oven
Black insert



Standard "D" inserts (.340")
Used with thermostats #1177, #1188 & #1193

SPARK SWITCH

1197

Oven
White insert



Standard "D" inserts (.340")

RANGE

SURFACE ELEMENTS

2391

6" - 3 turn
940W @ 208V • 1250W @ 240V



"Delta" bracket

2392

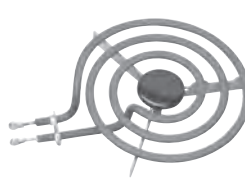
8" - 4 turn
1580W @ 208V • 2100W @ 240V



SURFACE ELEMENTS

2391B

6" - 3 turn
940W @ 208V • 1250W @ 240V



"Y" bracket

2392B

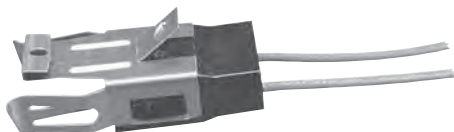
8" - 4 turn
1580W @ 208V • 2100W @ 240V



TERMINAL BLOCK

2875

45" lead wires



Has .250" female terminal ends

THERMOCOUPLE

1289

51-1/2" overall length

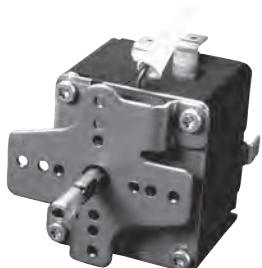


NEW

THERMOSTAT

2167

Electric
(factory id #6703G0015)
4 terminals
240V • 15 amp
50" capillary length

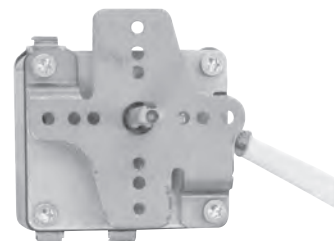


Uses thermostat knob #6374

THERMOSTAT

2168

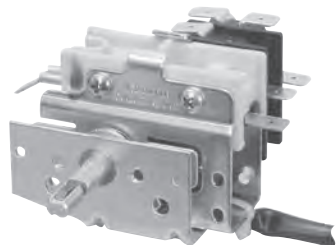
Electric
(factory id #6713G0020)
6 terminals
240V • 17 amp



THERMOSTAT

2169

Electric
(factory id #275-3485-00)
7 terminals
250V • 25 amp



NEW

THERMOSTAT

1194

Gas
(factory id #5362G0016)
3 Outlets
1" shaft length
Standing pilot
Bolt thru mount

Bolts go thru the manifold pipe and thread directly into thermostat



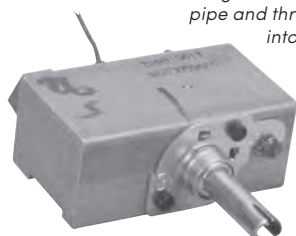
Bolts - #1196

THERMOSTAT

1195

Gas
(factory id #5396G0020)
2 Outlets
1" shaft length
Standing pilot
Bolt thru mount

Bolts go thru the manifold pipe and thread directly into thermostat



Bolts - #1196
Used with spark switch #1197

THERMOSTAT

1198

Gas
(factory id #275-3482-00)
2 terminals
15/16" shaft length

